



## City of Chesapeake

Chesapeake Fire Department  
Office of the Fire Marshal  
304 Albemarle Drive  
Chesapeake, VA. 23322  
757-382-6566 (Office)  
757-382-8313 (Fax)

**The following are selected Fire Safety and General Requirements for Outdoor Events, Tents, Air Supported, Air Inflated or Tensioned Membrane Structures, Carnivals, Fairs, Amusement Buildings, Exhibits or Trade Shows Based on the Virginia Statewide Fire Prevention Code (SFPC) and/or the Uniform Statewide Building Code (USBC).  
Effective Date: March 1, 2011**

**This handout is intended to serve as a general reference document, provide broad guidelines and identify code requirements concerning various events and occasions. It is not all inclusive or complete in content. This informational handout only covers the most frequently occurring applicable requirements.**

**For additional information please contact Deputy Fire Marshal Greg Orfield of the Chesapeake Fire Marshal's Office at (757) 382-6471 or at [gorfield@cityofchesapeake.net](mailto:gorfield@cityofchesapeake.net)**

**An Operational (Fire) Permit is required for any Outdoor Event or any event that is outside of the scope of the issued Operational (Fire) Permit for the occupancy. There is a \$50.00 charge for the permit. You will be billed by the Chesapeake Treasurer for the permit.**

Any request for a permit for an event must be accompanied by a detailed Public Safety and Fire Safety Plan. These plans are explained and required in Sections 403 and 404 of the SFPC

## 1. PERMITS

- A. USBC 112.1 Tents and air-supported structures that cover an area of 900 square feet (84 m<sup>2</sup>) or more, including all connecting areas or spaces with a common means of egress or entrance and with an occupant load of 50 or more persons requires a building permit from the Office of Development and Permits, (757) 382-6018.**
- B. SFPC 107.2.1.28 LP Gas.**  
An operational permit is required for:  
1. Storage and use of LP-gas.  
**Exception:** A permit is not required for individual containers with a 500- gallon (1893 L) water capacity or less serving occupancies in Group R-3.  
2. Operation of cargo tankers that transport LP-gas.
- C. SFPC 107.2.1.4 Carnivals and Fairs.**  
An operational permit is required to conduct a carnival or fair.
- D. SFPC 107.2.1.2 Amusement Buildings.**  
An operational permit is required to operate a special amusement building.
- E. SFPC 107.2.1.14 Exhibits and Trade Shows.**  
An operational permit is required to operate exhibits and trade shows.
- F. SFPC 107.2.1.34 Places of Assembly.**  
An operational permit is required to operate a place of assembly/educational occupancy. This includes A-5 Use Groups (Outdoor events)
- G. SFPC 107.2.1.36 Pyrotechnic Special Effects Materials.**  
An operational permit is required for use and handling of pyrotechnic special effects materials.
- H. SFPC 107.2.1.15 Explosives.**  
An operational permit is required for the manufacture, storage, handling, sale or use of any quantity of explosive, explosive material, fireworks, or pyrotechnic special effects within the scope of Chapter 33.

## **2. TENTS, CANOPIES & TEMPORARY MEMBRANE STRUCTURES**

### **A. SFPC 2401.1 Scope.**

Tents and membrane structures shall comply with this chapter. The provisions of Section 2403 are applicable only to temporary tents and membrane structures. The provisions of Section 2404 are applicable to temporary and permanent tents and membrane structures.

### **B. SFPC 2403.3 Place of Assembly.**

For the purposes of this chapter, a place of assembly shall include a circus, carnival, tent show, theater, skating rink, dance hall or other place of assembly in or under which persons gather for any purpose.

### **C. SFPC 1004.3 Posting of Occupant Load.**

Every room or space that is an assembly occupancy shall have the occupant load of the room or space posted in a conspicuous place, near the main exit or exit access doorway from the room or space. Posted signs shall be of an approved legible permanent design and shall be maintained by the owner or authorized agent.

### **D. SFPC 1001.3 Overcrowding.**

Overcrowding, admittance of any person beyond the approved occupant load established by the USBC or other building code under which the building was constructed, or obstructing aisles, passageways or any part of the means of egress shall not be allowed. The fire code official, upon finding any condition that constitutes a life safety hazard, shall be authorized to cause the event to be stopped until such condition or obstruction is corrected.

### **E. SFPC 2403.5 Use period.**

Temporary tents, air-supported, air-inflated or tensioned membrane structures shall not be erected for a period of more than 180 days within a 12-month period on a single premises.

### **F. SFPC 2403.6 Construction documents.**

A detailed site and floor plan for tents or membrane structures with an occupant load of 50 or more shall be provided with each application for approval. The tent or membrane structure floor plan shall indicate details of the means of egress facilities, seating capacity, arrangement of the seating and location and type of heating and electrical equipment.

### **G. SFPC 2403.7 Inspections.**

The entire tent, air-supported, air-inflated or tensioned membrane structure system shall be inspected at regular intervals, but not less than two times per permit use period, by the permittee, owner or agent to determine that the installation is maintained in accordance with this chapter.

**Exception:** Permit use periods of less than 30 days.

### **H. SFPC 2403.7.1 Inspection Report.**

When required by the fire code official, an inspection report shall be provided and shall consist of maintenance, anchors and fabric inspections.

**I. SFPC 2402.1 Definitions.**

The following words and terms shall, for the purposes of this chapter and as used elsewhere in this code, have the meanings shown herein.

**[B] AIR-INFLATED STRUCTURE.** A building where the shape of the structure is maintained by air pressurization of cells or tubes to form a barrel vault over the usable area. Occupants of such a structure do not occupy the pressurized areas used to support the structure.

**AIR-SUPPORTED STRUCTURE.** A structure wherein the shape of the structure is attained by air pressure, and occupants of the structure are within the elevated pressure area.

**MEMBRANE STRUCTURE.** An air-inflated, air-supported, cable or frame-covered structure as defined by the International Building Code and not otherwise defined as a tent. See Chapter 31 of the International Building Code.

**TENT.** A structure, enclosure or shelter, with or without sidewalls or drops, constructed of fabric or pliable material supported by any manner except by air or the contents that it protects.

**J. SFPC 2403.8.1 Access.**

Fire apparatus access roads shall be provided in accordance with Section 503.

**K. SFPC 2403.8.2 Location.**

Tents or membrane structures shall not be located within 20 feet (6096 mm) of lot lines, buildings, other tents or membrane structures, parked vehicles or internal combustion engines. For the purpose of determining required distances, support ropes and guy wires shall be considered as part of the temporary membrane structure or tent.

**Exceptions:**

1. Separation distance between membrane structures and tents not used for cooking is not required when the aggregate floor area does not exceed 15,000 square feet (1394 m<sup>2</sup>).
2. Membrane structures or tents need not be separated from buildings when all of the following conditions are met:
  - 2.1. The aggregate floor area of the membrane structure or tent shall not exceed 10,000 square feet (929 m<sup>2</sup>).
  - 2.2. The aggregate floor area of the building and membrane structure or tent shall not exceed the allowable floor area including increases as indicated in the International Building Code.
  - 2.3. Required means of egress are provided for both the building and the membrane structure or tent including travel distances.
  - 2.4. Fire apparatus access roads are provided in accordance with Section 503.

**L. SFPC 2403.8.3 Location of structures in excess of 15,000 square feet in area.**

Membrane structures having an area of 15,000 square feet (1,394 m<sup>2</sup>) or more shall be located not less than 50 feet (15,240 mm) from any other tent or structure as measured from the sidewall of the tent or membrane structure unless joined together by a corridor.

**M. SFPC 2403.8.5 Connecting Corridor.**

Tents or membrane structures are allowed to be joined together by means of corridors. Exit doors shall be provided at each end of such corridor. On each side of such corridor and approximately opposite each other, there shall be provided openings not less than 12 feet (3658 mm) wide.

**N. SFPC 2403.8.6 Fire Break.**

An unobstructed fire break passageway or fire road not less than 12 feet (3658 mm) wide and free from guy ropes or other obstructions shall be maintained on all sides of all tents and membrane structures unless otherwise approved by the fire code official.

**O. SFPC 2403.9 Anchorage required.**

Tents or membrane structures and their appurtenances shall be adequately roped, braced and anchored to withstand the elements of weather and prevent against collapsing. Documentation of structural stability shall be furnished to the fire code official on request.

**3. AIR-SUPPORTED AND AIR-INFLATED STRUCTURES**

**A. SFPC 2403.10.1 Door Operation.**

During high winds exceeding 50 miles per hour (22 m/s) or in snow conditions, the use of doors in air-supported structures shall be controlled to avoid excessive air loss. Doors shall not be left open.

**B. SFPC 2403.10.2 Fabric Envelope design and construction.**

Air-supported and air-inflated structures shall have the design and construction of the fabric envelope and the method of anchoring in accordance with Architectural Fabric Structures Institute ASI 77.

**C. SFPC 2403.10.3 Blowers.**

An air-supported structure used as a place of assembly shall be furnished with not less than two blowers, each of which has adequate capacity to maintain full inflation pressure with normal leakage. The design of the blower shall be so as to provide integral limiting pressure at the design pressure specified by the manufacturer.

**D. SFPC 2403.10.4 Auxiliary Power.**

Places of public assembly for more than 200 persons shall be furnished with either a fully automatic auxiliary engine-generator set capable of powering one blower continuously for 4 hours, or a supplementary blower powered by an internal combustion engine which shall be automatic in operation.

#### **4. FIRE SAFETY REQUIREMENTS FOR TENTS AND OTHER MEMBRANE STRUCTURES**

##### **A. SFPC 2404.3 Label.**

Membrane structures or tents shall have a permanently affixed label bearing the identification of size and fabric or material type.

##### **B. SFPC 2404.4 Certification.**

An affidavit or affirmation shall be submitted to the fire code official and a copy retained on the premises on which the tent or air-supported structure is located. The affidavit shall attest to the following information relative to the flame propagation performance criteria of the fabric:

1. Names and address of the owners of the tent or air-supported structure.
2. Date the fabric was last treated with flame-retardant solution.
3. Trade name or kind of chemical used in treatment.
4. Name of person or firm treating the material.
5. Name of testing agency and test standard by which the fabric was tested.

##### **C. SFPC 2404.5 Combustible Materials.**

Hay, straw, shavings or similar combustible materials shall not be located within any tent or membrane structure containing an assembly occupancy, except the materials necessary for the daily feeding and care of animals. Sawdust and shavings utilized for a public performance or exhibit shall not be prohibited provided the sawdust and shavings are kept damp. Combustible materials shall not be permitted under stands or seats at any time.

##### **D. SFPC 2404.6 Smoking.**

Smoking shall not be permitted in tents or membrane structures. Approved "No Smoking" signs shall be conspicuously posted in accordance with Section 310.

##### **E. SFPC 2404.7 Open or exposed flame.**

Open flame or other devices emitting flame, fire or heat or any flammable or combustible liquids, gas, charcoal or other cooking device or any other unapproved devices shall not be permitted inside or located within 20 feet (6096 mm) of the tent or membrane structures while open to the public unless approved by the fire code official.

##### **F. SFPC 2404.8 Fireworks.**

Fireworks shall not be used within 100 feet (30,480 mm) of tents or membrane structures.

##### **G. SFPC 2404.9 Spot Lighting.**

Spot or effect lighting shall only be by electricity, and all combustible construction located within 6 feet (1,829 mm) of such equipment shall be protected with approved noncombustible insulation not less than 9.25 inches (235 mm) thick.

##### **H. SFPC 2404.10 Safety Film.**

Motion pictures shall not be displayed in tents or membrane structures unless the motion picture film is safety film.

**I. SFPC 2404.11 Clearance.**

There shall be a minimum clearance of at least 3 feet (914 mm) between the fabric envelope and all contents located inside the tent or membrane structure.

**J. SFPC 2404.12 Portable Fire Extinguishers.**

Portable fire extinguishers shall be provided as required by Section 906.

**K. SFPC 2404.13 Fire Protection Equipment.**

Fire hose lines, water supplies and other auxiliary fire equipment shall be maintained at the site in such numbers and sizes as required by the fire code official.

**L. SFPC 2404.14 Occupant Load Factors.**

The occupant load allowed in an assembly structure, or portion thereof, shall be determined in accordance with Chapter 10.

**M. SFPC 2403.11 Seating Arrangements.**

Seating in tents or membrane structures shall be in accordance with Chapter 10.

**N. SFPC 2403.12.1 Exit distribution.**

Exits shall be spaced at approximately equal intervals around the perimeter of the tent or membrane structure, and shall be located such that all points are 100 feet (30 480 mm) or less from an exit.

**O. SFPC 408.1.1 Maintaining occupant load posting.**

Occupant load postings required by the building code are required to be maintained.

**P. SFPC 2403.12.2 Number.**

Tents or membrane structures or a usable portion thereof shall have at least one exit and not less than the number of exits required by table 2403.12.2. The total width of means of egress in inches (mm) shall not be less than the total occupant load served by a means of egress multiplied by 0.2 inches (5 mm) per person.

Table 2403.12.2 Minimum number of means of egress and means of egress widths from temporary membrane structures, tents and canopies

OCCUPANT LOAD	MINIMUM NUMBER OF MEANS OF EGRESS	MINIMUM WIDTH OF EACH MEANS OF EGRESS (inches)	
		Tent or Canopy	Membrane Structure
10 to 199	2	72	36
200 to 499	3	72	72
500 to 999	4	96	72
1,000 to 1,999	5	120	96
2,000 to 2,999	6	120	96
Over 3,000 <sup>a</sup>	7	120	96

For SI: 1 inch = 25.4 mm. a. When the occupant load exceeds 3,000, the total width of means of egress (in inches) shall not be less than the total occupant load multiplied by 0.2 inches per person.

**Q. SFPC 2403.12.5 Exit openings.**

Exit openings from tents shall remain open unless covered by a flame-resistant curtain. The curtain shall comply with the following requirements:

1. Curtains shall be free sliding on a metal support. The support shall be a minimum of 80 inches (2,032 mm) above the floor level at the exit. The curtains shall be so arranged that, when open, no part of the curtain obstructs the exit.
2. Curtains shall be of a color, or colors, that contrasts with the color of the tent.

**R. SFPC 2403.12.4 Doors.**

Exit doors shall swing in the direction of exit travel. To avoid hazardous air and pressure loss in air-supported membrane structures, such doors shall be automatic closing against operating pressures. Opening force at the door edge shall not exceed 15 pounds (66 N).

**S. SFPC 2403.12.5 Aisle.**

The width of aisles without fixed seating shall be in accordance with the following:

1. In areas serving employees only, the minimum aisle width shall be 24 inches (610 mm) but not less than the width required by the number of employees served.
2. In public areas, smooth-surfaced, unobstructed aisles having a minimum width of not less than 44 inches (1,118 mm) shall be provided from seating areas, and aisles shall be progressively increased in width to provide, at all points, not less than 1 foot (305 mm) of aisle width for each 50 persons served by such aisle at that point.

**T. SFPC 2403.12.5.1 Arrangement and maintenance.**

The arrangement of aisles shall be subject to approval by the fire code official and shall be maintained clear at all times during occupancy.

**U. SFPC 2403.12.6 Exit Signs.**

Exits shall be clearly marked. Exit signs shall be installed at required exit doorways and where otherwise necessary to indicate clearly the direction of egress when the exit serves an occupant load of 50 or more.

**V. SFPC 2403.12.6.1 Exit Sign Illumination.**

Exit signs shall be either listed and labeled in accordance with UL 924 as the internally illuminated type and used in accordance with the listing or shall be externally illuminated by luminaires supplied in the following manner:

1. Two separate circuits, one of which shall be separate from all other circuits, for occupant loads of 300 or less; or
2. Two separate sources of power, one of which shall be an approved emergency system, shall be provided when the occupant load exceeds 300. Emergency systems shall be supplied from storage batteries or from the on-site generator set, and the system shall be installed in accordance with NFPA 70. The emergency system provided shall have a minimum duration of 90 minutes when operated at full design demand.

**W. SFPC 2403.12.7 Means of Egress Illumination.**

Means of egress shall be illuminated with light having an intensity of not less than 1 foot-candle (11 lux) at floor level while the structure is occupied. Fixtures required for means of egress illumination shall be supplied from a separate circuit or source of power.



**X. SFPC 2403.12.8 Maintenance of means of egress.**

The required width of exits, aisles and passageways shall be maintained at all times to a public way. Guy wires, guy ropes and other support members shall not cross a means of egress at a height of less than 8 feet (2438 mm). The surface of means of egress shall be maintained in an approved manner.

**Y. SFPC 2404.15 Installation.**

Heating and cooking equipment shall be in accordance with Sections 2404.15.1 through 2404.15.7.

**Z. SFPC 2404.15.1 Installation.**

Heating or cooking equipment, tanks, piping, hoses, fittings, valves, tubing and other related components shall be installed as specified in the International Mechanical Code and the International Fuel Gas Code, and shall be approved by the fire code official.

**AA. SFPC 2404.15.2 Venting.**

Gas, liquid and solid fuel-burning equipment designed to be vented shall be vented to the outside air as specified in the International Fuel Gas Code and the International Mechanical Code. Such vents shall be equipped with approved spark arresters when required. Where vents or flues are used, all portions of the tent or membrane structure shall be not less than 12 inches (305 mm) from the flue or vent.

**BB. SFPC 2404.15.3 Location.**

Cooking and heating equipment shall not be located within 10 feet (3048 mm) of exits or combustible materials.

**CC. SFPC 2404.15.4 Operations.**

Operations such as warming of foods, cooking demonstrations and similar operations that use solid flammables, butane or other similar devices which do not pose an ignition hazard, shall be approved.

**DD. SFPC 2404.15.5 Cooking Tents.**

Tents with sidewalks or drops where cooking is performed shall be separated from other tents or membrane structures by a minimum of 20 feet (6096 mm).

**EE. SFPC 2404.15.6 Outdoor Cooking.**

Outdoor cooking that produces sparks or grease-laden vapors shall not be performed within 20 feet (6096 mm) of a tent or membrane structure...

**FF. SFPC 2404.15.7 Electrical Heating and Cooking Equipment.**

Electrical cooking and heating equipment shall comply with NFPA 70.

**GG. SFPC 110.1 Turkey Fryers.**

Turkey fryers will not be permitted at events open to the public or held on city property. Turkey fryers are highly discouraged at all events since they pose an above average fire and burn risk.

Turkey fryers may be used to boil water only, as long as the pots width is equal to or greater than its height, to prevent a spilling or tipping hazard.

## **5. LP GAS**

### **A. SFPC 2404.16 General.**

The storage, handling and use of LP-gas and LP-gas equipment shall be in accordance with Sections 2404.16.1 through 2404.16.3

### **B. SFPC 2404.16.2 Location of Containers.**

LP-gas containers shall be located outside. Safety release valves shall be pointed away from the tent or membrane structure.

### **C. SFPC 2404.16.2.1 Containers 500 gallons or less.**

Portable LP-gas containers with a capacity of 500 gallons (1,893 L) or less shall have a minimum separation between the container and structure not less than 10 feet (3,048 mm).

### **D. SFPC 2404.16.2.2 Containers more than 500 gallons.**

Portable LP-gas containers with a capacity of more than 500 gallons (1893 L) shall have a minimum separation between the container and structures not less than 25 feet (7,620 mm).

### **E. SFPC 2404.16.3 Protection and Security.**

Portable LP-gas containers, piping, valves and fittings which are located outside and are being used to fuel equipment inside a tent or membrane structure shall be adequately protected to prevent tampering, damage by vehicles or other hazards and shall be located in an approved location. Portable LP-gas containers shall be securely fastened in place to prevent unauthorized movement.

## **6. FLAMMABLE AND COMBUSTIBLE LIQUIDS**

### **A. SFPC 2404.17.1 Use.**

Flammable-liquid-fueled equipment shall not be used in tents or membrane structures.

### **B. SFPC 2404.17.2 Flammable and combustible liquid storage.**

Flammable and combustible liquids shall be stored outside in an approved manner not less than 50 feet (15,240 mm) from tents or membrane structures. Storage shall be in accordance with Chapter 34.

### **C. SFPC 2404.17.3 Refueling.**

Refueling shall be performed in an approved location not less than 20 feet (6,096 mm) from tents or membrane structures.

## **7. LIQUID- AND GAS-FUELED VEHICLES**

### **A. SFPC 2404.18 Display of Motor Vehicles.**

Liquid- and gas-fueled vehicles and equipment used for display within tents or membrane structures shall be in accordance with Sections 2404.18.1 through 2404.18.5.3.

### **B. SFPC 2404.18.1 Batteries.**

Batteries shall be disconnected in an appropriate manner.

### **C. SFPC 2404.18.2 Fuel Systems.**

Vehicles or equipment shall not be fueled or defueled within the tent or membrane structure.

### **D. SFPC 2404.18.2.1 Quantity Limit.**

Fuel in the fuel tank shall not exceed one-quarter of the tank capacity or 5 gallons (19 L), whichever is less.

### **E. SFPC 2404.18.2.2 Inspection.**

Fuel systems shall be inspected for leaks.

### **F. SFPC 2404.18.2.3 Closure.**

Fuel tank openings shall be locked and sealed to prevent the escape of vapors.

### **G. SFPC 2404.18.3 Location.**

The location of vehicles or equipment shall not obstruct means of egress.

### **H. SFPC 2404.18.4 Places of Assembly.**

When a compressed natural gas (CNG) or liquefied petroleum gas (LP-gas) powered vehicle is parked inside a place of assembly, all the following conditions shall be met:

1. The quarter-turn shutoff valve or other shutoff valve on the outlet of the CNG or LP-gas container shall be closed and the engine shall be operated until it stops. Valves shall remain closed while the vehicle is indoors.
2. The hot lead of the battery shall be disconnected.
3. Dual-fuel vehicles equipped to operate on gasoline and CNG or LP-gas shall comply with this section and Sections 2404.18.1 through 2404.18.5.3 for gasoline-powered vehicles.

### **I. SFPC 2404.18.5 Competitions and demonstrations.**

Liquid and gas-fueled vehicles and equipment used for competition or demonstration within a tent or membrane structure shall comply with Sections 2404.18.5.1 through 2404.18.5.3.

### **J. SFPC 2404.18.5.1 Fuel Storage.**

Fuel for vehicles or equipment shall be stored in approved containers in an approved location outside of the structure in accordance with Section 2404.17.2.

### **K. SFPC 2404.18.5.2 Fueling.**

Refueling shall be performed outside of the structure in accordance with Section 2404.17.3

### **L. SFPC 2404.18.5.3 Spills.**

Fuel spills shall be cleaned up immediately.

## **8. GENERATORS**

### **A. SFPC 2404.19 Separation.**

Generators and other internal combustion power sources shall be separated from tents or membrane structures by a minimum of 20 feet (6,096 mm) and shall be isolated from contact with the public by fencing, enclosure or other approved means.

## **9. HOUSEKEEPING**

### **A. SFPC 2404.21 Combustible Vegetation Removal.**

Combustible vegetation shall be removed from the area occupied by a tent or membrane structure, and from areas within 30 feet (9,144 mm) of such structures.

### **B. SFPC 2404.22 Combustible Waste Material.**

The floor surface inside tents or membrane structures and the grounds outside and within a 30-foot (9144 mm) perimeter shall be kept free of combustible waste and other combustible materials that could create a fire hazard. Such waste shall be stored in approved containers and removed from the premises at least once a day during the period the structure is occupied by the public.

## **10. FIRE EXTINGUISHERS AND OTHER FIRE PROTECTION EQUIPMENT**

### **A. SFPC 2404.12 Portable Fire Extinguishers.**

Portable fire extinguishers shall be provided as required by Section 906.

### **B. SFPC 906.5 Conspicuous location.**

Portable fire extinguishers shall be located in conspicuous locations where they will be readily accessible and immediately available for use. These locations shall be along normal paths of travel, unless the fire code official determines that the hazard posed indicates the need for placement away from normal paths of travel.

### **C. SFPC 904.11.5.2 Class K portable fire extinguishers for deep fat fryers.**

When hazard areas include deep fat fryers, listed Class K portable fire extinguishers shall be provided as follows:

1. For up to four fryers having a maximum cooking medium capacity of 80 pounds (36.3 kg) each: One Class K portable fire extinguisher of a minimum 1.5 gallon ( 6 L) capacity.
2. For every additional group of four fryers having a maximum cooking medium capacity of 80 pounds (36.3 kg) each: One additional Class K portable fire extinguisher of a minimum 1.5 gallon (6 L) capacity shall be provided.
3. For individual fryers exceeding 6 square feet (0.55 m<sup>2</sup>) in surface area: Class K portable fire extinguishers shall be installed in accordance with the extinguisher manufacturer's recommendations.

## **11. INDOOR DISPLAYS**

### **A. SFPC 314.1 General.**

Indoor displays constructed within any occupancy shall comply with Sections 314.2 through 314.5.

### **B. SFPC 314.2 Fixtures and displays.**

Fixtures and displays of goods for sale to the public shall be arranged so as to maintain free, immediate, and unobstructed access to exits as required by Chapter 10.

### **C. SFPC 314.3 Highly Combustible Goods.**

The display of highly combustible goods, including but not limited to fireworks, flammable or combustible liquids, liquefied flammable gases, oxidizing materials, pyroxylin plastics and agricultural goods, in main exit access aisles, corridors, covered malls, or within 5 feet (1,524 mm) of entrances to exits and exterior exit doors is prohibited when a fire involving such goods would rapidly prevent or obstruct egress.

### **D. SFPC 314.4 Vehicles.**

Liquid- or gas-fueled vehicles, boats, or other motor craft shall not be located indoors except as follows:

1. Batteries are disconnected.
2. Fuel in tanks does not exceed one-quarter tank or 5 gallons (19 L), whichever is least.
3. Fuel tanks and fill openings are closed and sealed to prevent tampering.
4. Vehicles, boats, or other motor craft equipment are not fueled or defueled within the building.

## **12. PUBLIC SAFETY AND FIRE SAFETY PLANS AND STANDBY PERSONNEL**

### **A. SFPC 403.2 Public safety plan.**

In other than Group A or E occupancies, where the fire code official determines that an indoor or outdoor gathering of persons has an adverse impact on public safety through diminished access to buildings, structures, fire hydrants and fire apparatus access roads or where such gatherings adversely affect public safety services of any kind, the fire code official shall have the authority to order the development of, or prescribe a plan for, the provision of an approved level of public safety.

### **B. SFPC 403.2.1 Contents.**

The public safety plan, where required by Section 403.2, shall address such items as emergency vehicle ingress and egress, fire protection, emergency medical services, public assembly areas and the directing of both attendees and vehicles (including the parking of vehicles), vendor and food concession distribution, and the need for the presence of law enforcement, and fire and emergency medical services personnel at the event.

### **C. SFPC 404.2 Where required. Fire safety and evacuation plan.**

An approved fire safety and evacuation plan shall be prepared and maintained for the following occupancies and buildings.

1. Group A, other than Group A occupancies used exclusively for purposes of religious worship that have an occupant load less than 2,000.

### **D. SFPC 404.3.1 Fire evacuation plans.**

Fire evacuation plans shall include the following:

1. Emergency egress or escape routes and whether evacuation of the building is to be complete or, where approved, by selected floors or areas only.
2. Procedures for employees who must remain to operate critical equipment before evacuating.
3. Procedures for assisted rescue for persons unable to use the general means of egress unassisted.
4. Procedures for accounting for employees and occupants after evacuation has been completed.
5. Identification and assignment of personnel responsible for rescue or emergency medical aid.
6. The preferred and any alternative means of notifying occupants of a fire or emergency.
7. The preferred and any alternative means of reporting fires and other emergencies to the fire department or designated emergency response organization.
8. Identification and assignment of personnel who can be contacted for further information or explanation of duties under the plan.
9. A description of the emergency voice/alarm communication system alert tone and preprogrammed voice messages, where provided.

**PUBLIC SAFETY AND FIRE SAFETY PLANS AND STANDBY PERSONNEL (Continued)**

**E. SFPC 404.3.2 Fire safety plans.**

Fire safety plans shall include the following:

1. The procedure for reporting a fire or other emergency.
2. The life safety strategy and procedures for notifying, relocating or evacuating occupants, including occupants who need assistance.
3. Site plans indicating the following:
  - 3.1. The occupancy assembly point.
  - 3.2. The locations of fire hydrants.
  - 3.3. The normal routes of fire department vehicle access.
4. Floor plans identifying the locations of the following:
  - 4.1. Exits.
  - 4.2. Primary evacuation routes.
  - 4.3. Secondary evacuation routes.
  - 4.4. Accessible egress routes.
  - 4.5. Areas of refuge.
  - 4.6. Exterior areas for assisted rescue.
  - 4.7. Manual fire alarm boxes.
  - 4.8. Portable fire extinguishers.
  - 4.9. Occupant-use hose stations.
  - 4.10. Fire alarm annunciators and controls.
5. A list of major fire hazards associated with the normal use and occupancy of the premises, including maintenance and housekeeping procedures.
6. Identification and assignment of personnel responsible for maintenance of systems and equipment installed to prevent or control fires.
7. Identification and assignment of personnel responsible for maintenance, housekeeping and controlling fuel hazard sources.

## **PUBLIC SAFETY AND FIRE SAFETY PLANS AND STANDBY PERSONNEL (Continued)**

### **F. SFPC 2404.20 Crowd Managers.**

When, in the opinion of the fire code official, it is essential for public safety in a tent or membrane structure used as a place of assembly or any other use where people congregate, because of the number of persons, or the nature of the performance, exhibition, display, contest or activity, the owner, agent or lessee shall employ one or more qualified persons, as required and approved, to remain on duty during the times such places are open to the public, or when such activity is being conducted.

### **G. SFPC 2404.20.1 Duties**

Before each performance or the start of such activity, standby personnel shall keep diligent watch for fires during the time such place is open to the public or such activity is being conducted and take prompt measures for extinguishment of fires that occur and assist in the evacuation of the public from the structure.

### **H. SFPC 403.1 Fire Watch personnel.**

When, in the opinion of the fire code official, it is essential for public safety in a place of assembly or any other place where people congregate, because of the number of persons, or the nature of the performance, exhibition, display, contest or activity, the owner, agent or lessee shall provide one or more fire watch personnel, as required and approved, to remain on duty during the times such places are open to the public, or when such activity is being conducted.

### **I. SFPC 403.1.1 Duties.**

Fire watch personnel shall keep diligent watch for fires, obstructions to means of egress and other hazards during the time such place is open to the public or such activity is being conducted and take prompt measures for remediation of hazards, extinguishment of fires that occur and assist in the evacuation of the public from the structures

### **J. SFPC 403.3 Crowd managers.**

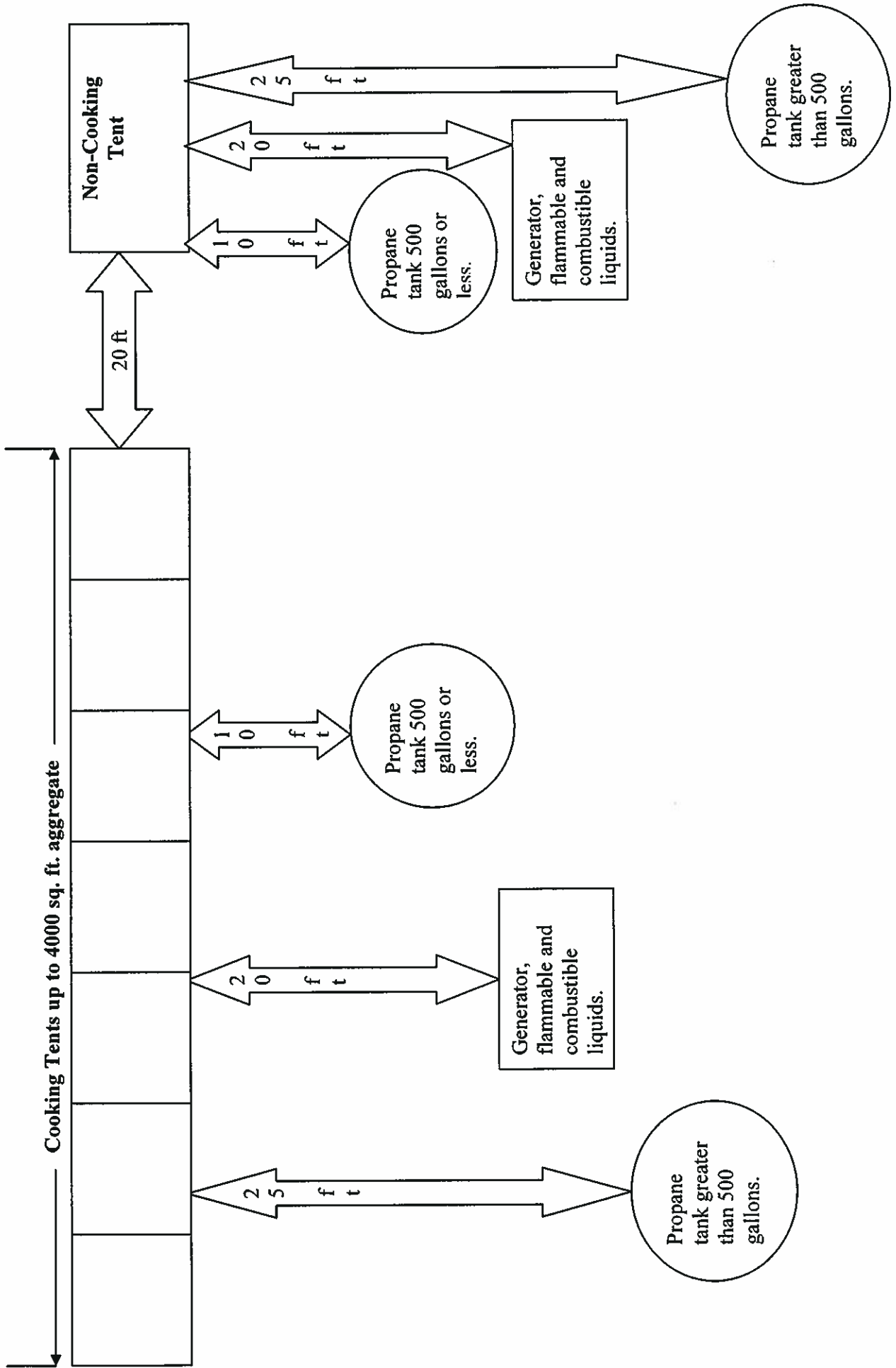
Trained crowd managers shall be provided for facilities or events where more than 1,000 persons congregate. The minimum number of crowd managers shall be established at a ratio of one crowd manager to every 250 persons. Where approved by the fire code official, the ratio of crowd managers shall be permitted to be reduced where the facility is equipped throughout with an approved automatic sprinkler system or based upon the nature of the event.



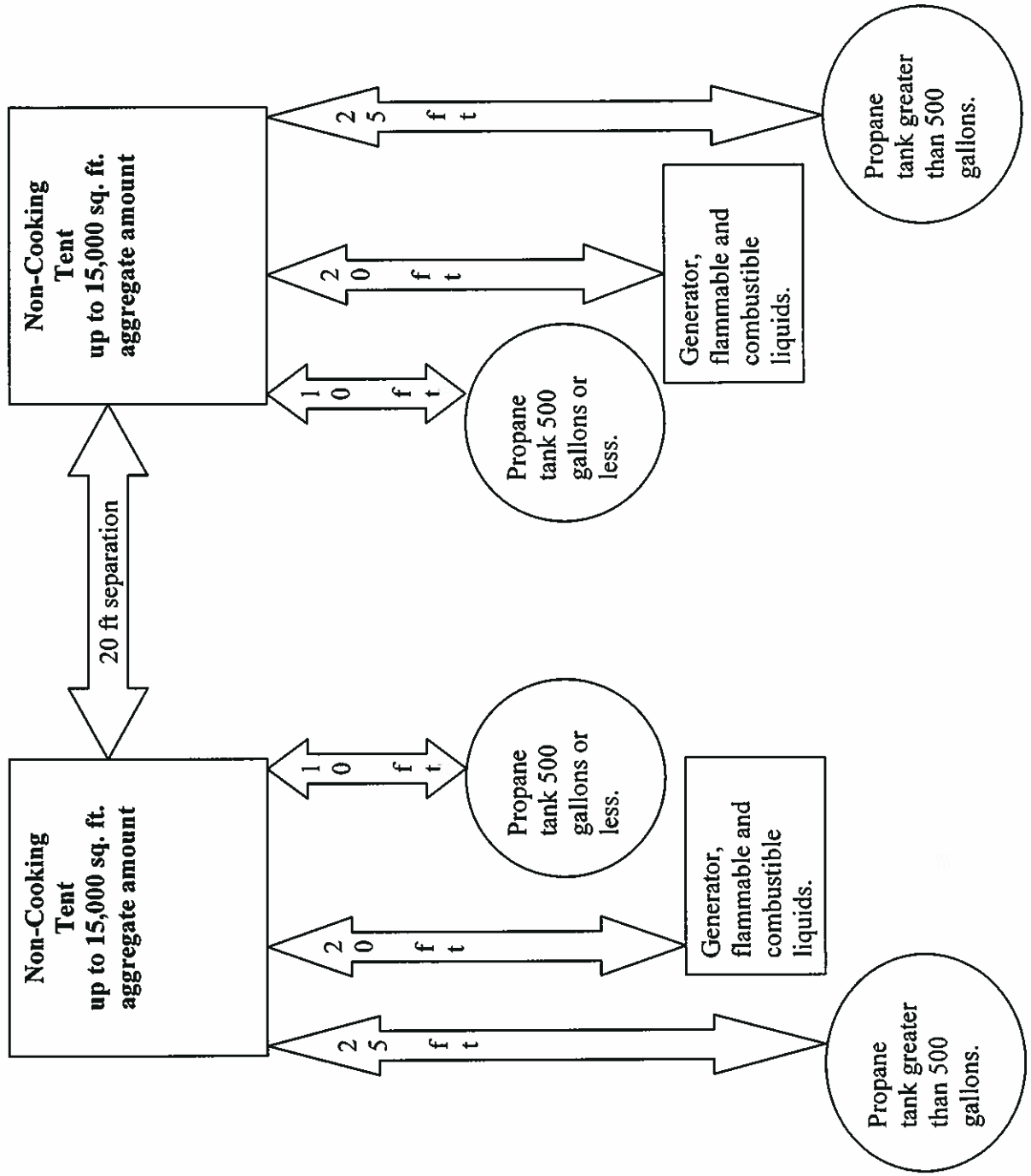
**PUBLIC SAFETY AND FIRE SAFETY PLANS AND STANDBY PERSONNEL (Continued)**

**\*\*\*\* For events with expected attendance of over 1000 people, the event holder shall be required to have a minimum, two (2) trained, Virginia certified and approved Fire Marshal's (FM) to assist with Crowd control, fire watch and other duties as may be required. The requirement for FM's may be increased or decreased as needed after a complete evaluation of the event and activities by the Chief Fire Marshal or his/her designee. The FM's shall be on site a minimum of two (2) hours prior to the opening of the event to ensure code compliance inspections are conducted of the site. This requirement shall be a condition of the Operational Permit for the event. If the event involves Fireworks, an additional Operational Permit will be required and additional FM's may be required. These FM's will be provided by the Chesapeake Fire Marshal's Office. The event holder will be billed up to and not to exceed the total cost of the required FM's at the end of the event.**

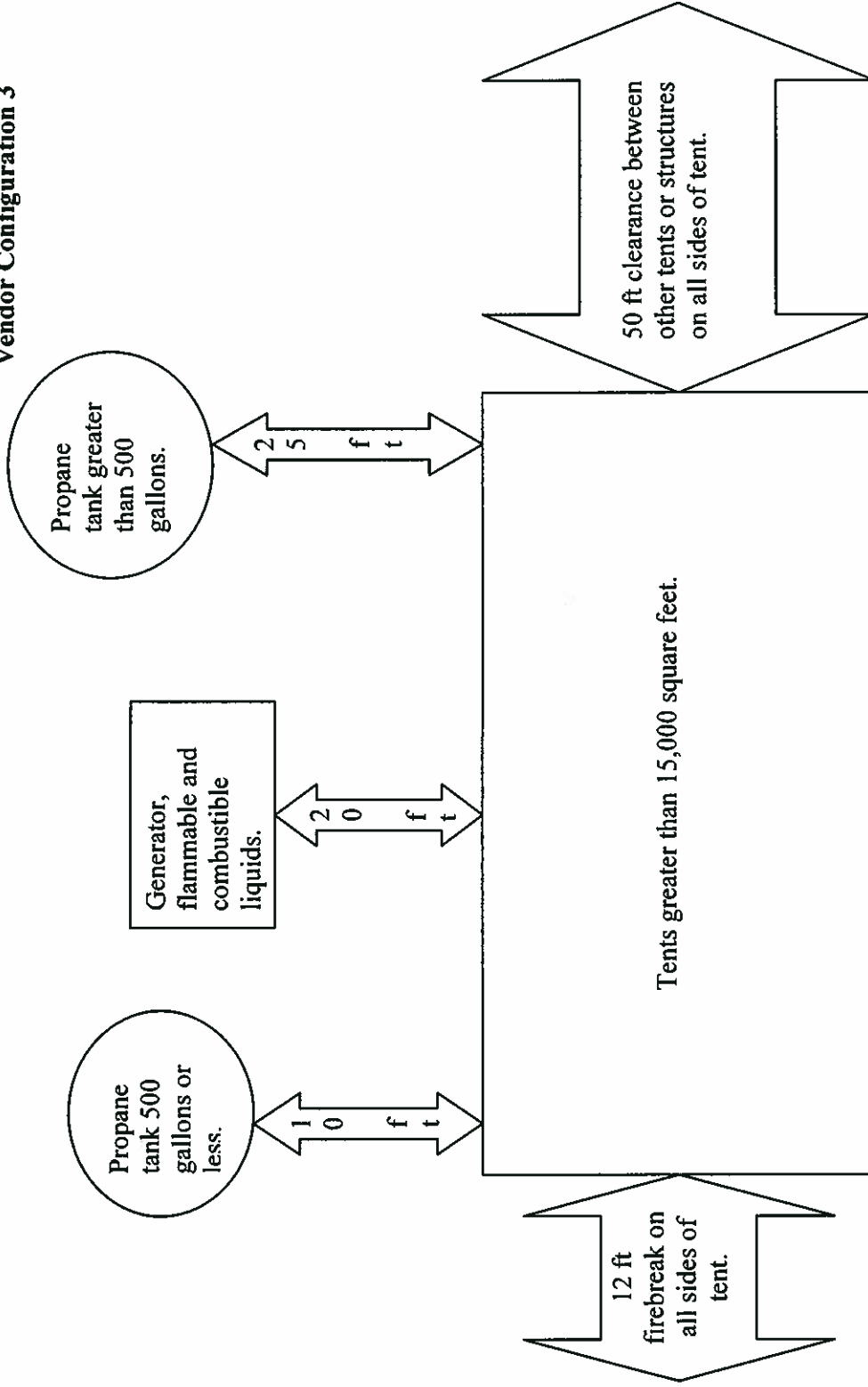
**Vendor Configuration 1**



**Vendor Configuration 2**



### Vendor Configuration 3



**Access:** Fire apparatus roads shall be provided in accordance with section 503 (2403.1).

**Fire break:** An unobstructed fire break passageway or fire road not less than 12 feet wide and free from guy ropes or other obstructions shall be maintained on all sides of all tents, air supported, air-inflated or tensioned membrane structures that exceed 15,000 square feet.